

# Elementary Newsletter

Thursday, January 28, 2010

## 2010-2011 Closed Enrollment

We would like to remind you that closed enrollment begins on **Monday, February 1<sup>st</sup>**. This allows you to re-enroll your child(ren) and any siblings prior to our accepting new students from our waiting list. Your re-enrollment packet for the 2010-2011 school year will be in your cubby/hanging folder by Monday, February 1<sup>st</sup>.

### If you wish to re-enroll and/or enroll an additional child:

- Please read the accompanying Parent Handbook to be sure that you are aware of any policy changes that have occurred.
- Fill out the contract, indicating the program of your choice and return it to the office **signed by both parents or by the custodial parent** in the case of sole custody, by **February 26<sup>th</sup>**. Please make sure to indicate the payment plan you desire, and make a choice about photos on page 4. The contract should be accompanied by a payment of \$500.00 for the annual enrollment fee.
- This ensures your space for the 2010-2011 school year.

### If you do not wish to re-enroll:

- Please submit a written notice of withdrawal by **February 26<sup>th</sup>**, or your deposit will be forfeited.
- Verbal notice cannot be accepted.
- The last month's deposit cannot be applied to summer school.



## EI Field Trip

### Children's Discovery Museum Wednesday, February 10<sup>th</sup>

The Elementary I students will be visiting the Children's Discovery Museum in San Jose. Students will return to school after lunch.

The San Jose students will be transported by bus and *will leave promptly at 9:15 am*. The Santa Clara students will be carpooling. If you can help drive students, please let us know on the permission slip which you will find in your parent file.

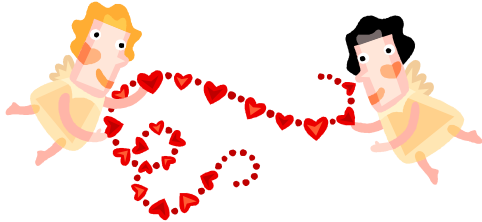
For the Santa Clara students that still require booster seats, we prefer that you drop off a backless booster seat for your child. Some of the compact cars that our parents and staff

drive cannot fit the large booster seats in the backseat.

Students will need to bring a *disposable* bag lunch, including a drink, napkin, and any necessary utensils. Do not send any food that requires heating up.

## Valentine's Day Party

Friday, February 12<sup>th</sup>

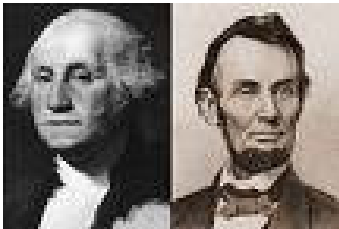


On Friday, February 12<sup>th</sup>, we will have a party at each site to celebrate Valentine's Day.

Attached you will find a list of children's names for Valentine's cards. A list of items needed will be posted in the sign-in/out area for the following families who volunteered:

**San Jose:** Ackley, Arbizu, Arndt, Ayache, Burdsall, Capron, Casier, Damron, Feyfant, Fonderie, Hawes, Jones, MacInnis, Moshy, Sakaguchi, Taylor (Sammie)

**Santa Clara:** James, Khemani, Rajeshwaran, Van Lee-Pyun.



## Presidents' Days

February 15<sup>th</sup> – February 16<sup>th</sup>

We will honor Presidents Washington and Lincoln on Monday and Tuesday, February 15<sup>th</sup> and 16<sup>th</sup>. There will be no school and no daycare on those days.



## Chinese New Year

Friday, February 12<sup>th</sup>

Mrs. Yuan (Garrett's mom) will give a presentation to the San Jose students about Chinese New Year, in preparation for our celebration on February 17<sup>th</sup>.

Wednesday, February 17<sup>th</sup>

We will be celebrating Chinese New Year with the Primary classes on Wednesday, February 17<sup>th</sup> at both sites. We will have special activities, a dragon dance performance, and a luncheon. **You do not need to send a lunch with your child on this day.** We are asking for a contribution of \$6 per child to cover the cost of the meal. Please bring it in **to the office by Wednesday, February 10<sup>th</sup>.**

## Music from Japan

Monday, February 22<sup>nd</sup>

The Elementary I and II students will be enjoying a performance by *Akatombo Ensemble* at the San Jose site. The Santa Clara students will be traveling to the San Jose site on a bus with the Primary students. They will return to the Santa Clara site before lunch.

Akatombo Ensemble will perform a traditional rhythm, melody and dance of Japan. The program demonstrates a wide spectrum of dance and music styles, from the classical *kabuki* feel of Japan's old capitol Kyoto, to the lively folk dances of northern Japan.

## Monday Snack

If you haven't already signed up to bring a snack on a Monday, please do so at the sign-in/out area. We still have a few spaces left for Elementary II and Elementary I in Santa Clara.

We would also like to ask that you check the schedule ahead of time to know when you have signed up to bring snack, as Mondays are the only day our schedule allows us to add in the extra time needed for snack.

## Tuition Checks

We would like to remind you to please write your child's name on your tuition checks, as we have some families with the same last name, as well as children and parents who have different last names. If you are paying your tuition through an online billing system, please indicate your child's name in the account number field. We appreciate your cooperation.

## Tax Time is Coming

If you will need a recap statement for 2009 for tax purposes, please let Liz know soon, as she will get very busy prior to **April 1<sup>st</sup>**. Liz can be reached at her home office (408) 259-6997. Our Tax I.D. number is 94-2930042.



Thank you to all the families who made donations to our Second Harvest food drive. Our school donated a total of 528 pounds of food for needy families.

## From San Jose:

- Thank you to the Bernhard, Boulos, Burdsall, Himawan, Sakaguchi and Van den Berg-Fonderie families for Monday snacks, and to Forouzan Hojjat for doing the pet store shopping for EI.
- Thank you to the Arndt, Feyfant, Nguyen, Bernhard, Tang, Kakaria and Hawes families for their donations towards our holiday wish list.
- Thanks to Kristi Burdsall for her donation of pens and pencils.
- Thank you to all the families who donated clothing for the impoverished children in Costa Rica.

## From Santa Clara:

- Thank you to the Kalina family for Monday snack.
- Thank you to the James, Khemani, Rajeshwaran and Rice families for doing the Friday laundry.
- Thank you to the James, Khemani, Rice, Rajeshwaran and Vudali families for their donations towards our holiday wish list.

We were able to purchase:

*Striped Juggling Balls*  
*Portable Hopscotch Carpet*  
*Rubber Horse Shoes*  
*Root-View Farm*  
*Compact binoculars*  
*Beginner's World Atlas*  
*Coin Board*

We will be ordering the following within the next few days:

*The Bug Bottle*  
*Nature Press*  
*My Little Box of Planets*  
*Wonderful Houses around the World*  
*Throw Your Tooth on the Roof*  
*Homes book*  
*Clothing book*  
*Design-a-Postcard Pack*

# Looking Ahead to

## March:

**March 1<sup>st</sup>** - First day of the 2010 - 2011 open enrollment and the Summer School enrollment.

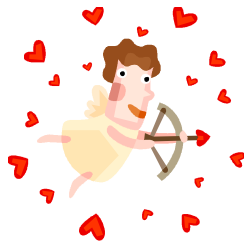
**March 5<sup>th</sup>** - Ms. Bernhard (Isabella's mom) will give a presentation to the San Jose students about Norooz (Persian New Year). Also, all Elementary students are invited to the Hero Party, our annual overnight event, which will be at the San Jose campus. Additional information will be given in the March newsletter.

**March 9<sup>th</sup>** - The students will enjoy a performance of Bruce Cotter, our favorite bagpipe player, at their respective campuses.

**March 19<sup>th</sup>** - Ms. Bernhard will give a follow-up presentation to the San Jose students about Norooz (Persian New Year). This day is also a minimum day. School will end at 12:00 p.m. There will be no daycare.

**March 25<sup>th</sup>** - EI & EII will attend a performance of *Rumpelstiltskin* at Santa Clara University's Mayer Theatre, 9:30 a.m.

**March 26<sup>th</sup>** - The students will enjoy a performance of Niosha (a Persian dancer), at their respective campuses.



## Valentine's Day Party

For our Valentine's Day celebration we will be exchanging Valentine cards.

If your student wishes to distribute Valentine cards, please have him/her make them out for everyone in his or her class, and bring them to school on February 12<sup>th</sup>.

Below is a list of the students in each class.

### **Elementary I (San Jose)**

Josefine Ackley  
Maxwell Arbizu  
Chase Arndt  
Isabella Bernhard  
Grace Boulos  
Mae Capron  
Jonathan Casier  
Kellen Damron  
Spencer Farley  
Aymeric Feyfant  
Ashley Hoang  
Gabriel Keith  
Thea León  
Sammy MacInnis  
Manon Maillart  
Adrien Moll  
Cassandra Moshy  
Quinten Moshy  
Eden Nguyen  
Hugo Pochet  
Noah Pochet  
Yuji Sakaguchi  
Emma Schuman  
Nicholas Tang  
Samantha Taylor  
Victoria Taylor  
Garrett Yuan

### **Elementary II**

Jonathan Ayache  
Owen Burdsall  
Sara Fard  
Sydney Fonderie  
Sofia Hawes  
Jenna Himawan  
Rachel Jones  
Reva Kakaria  
Quintin León  
Pia Satana

### **Elementary I (Santa Clara)**

Medha Iyer  
Avery James  
Jenna Kalina  
Anirudh Khemani  
George Matuskevych  
Akshaya Rajeshwaran  
Katie Rice  
Audrey Van Leer  
Urmila Vudali